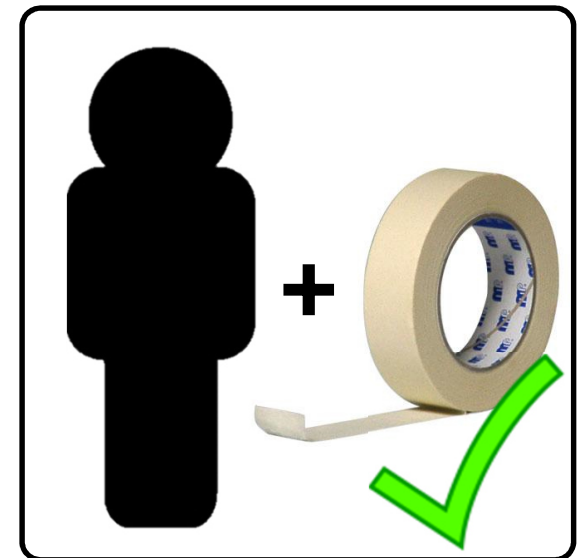
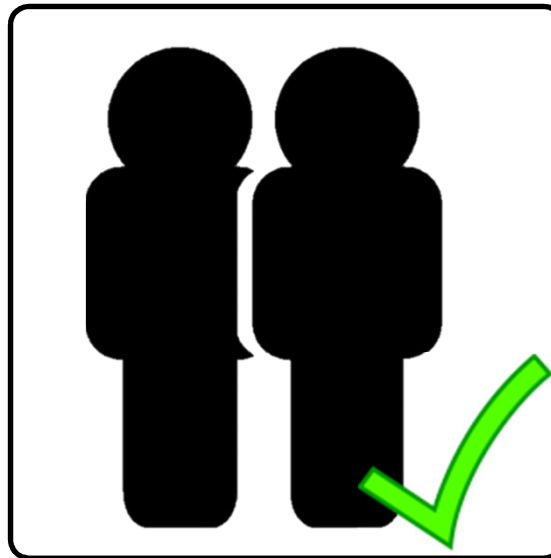
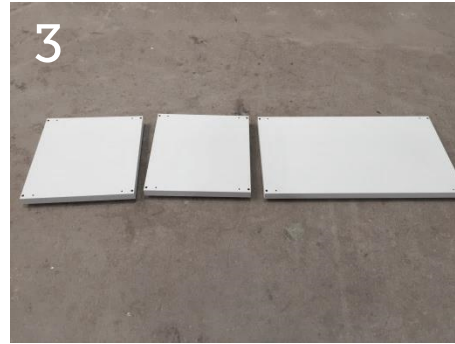


montage-anleitung

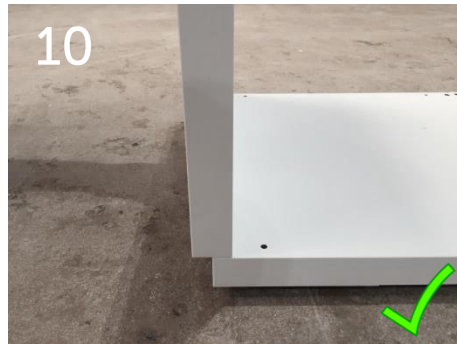
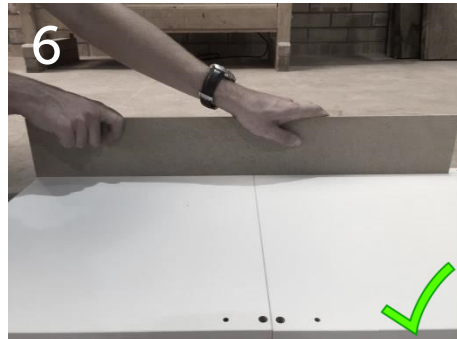


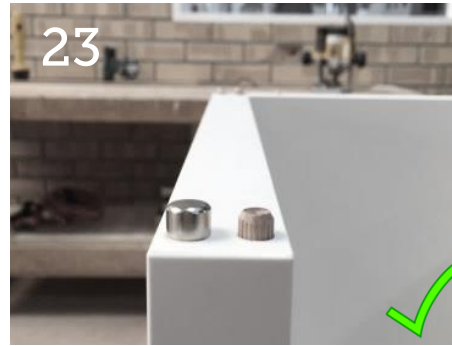
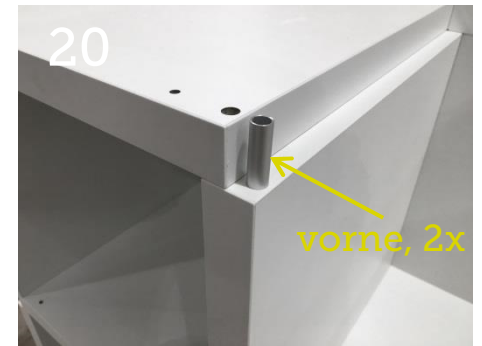
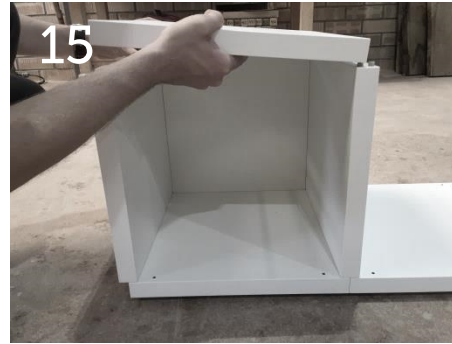
- 2-4 regal aufbauen (inkl. hohe nische)
- 4-5 eckmodul
- 5 abschlussmodul
- 6-7 türen montieren
- 7-8 schubladen-einsatz
- 8-9 schubladen

- 10 tablar modul
- 10 türen vor tablar modul
- 11 umbauen
- 12 boxen falten



aufbau eckmodul -> sieh seite 4-5

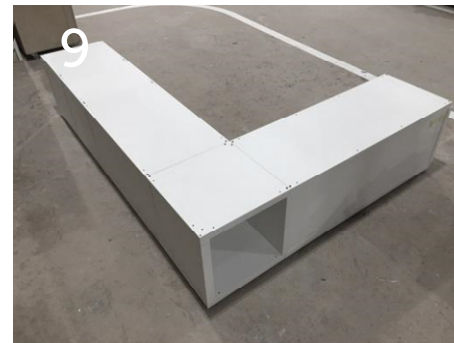
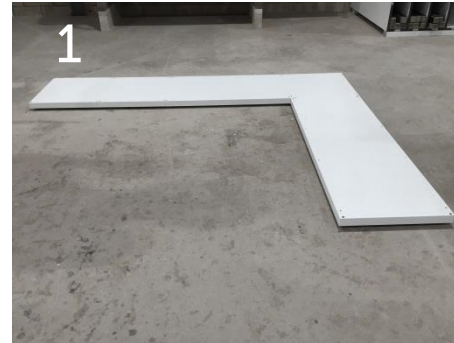


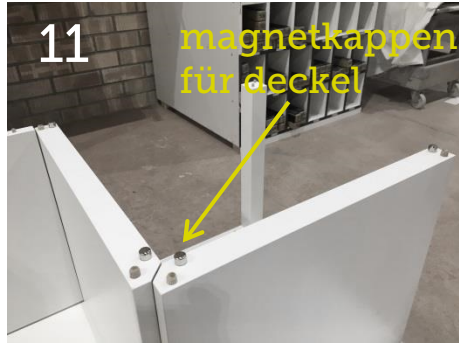


rückwand vorne für raumteiler



eckmodul



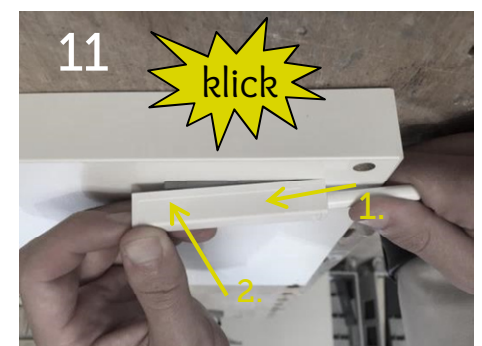
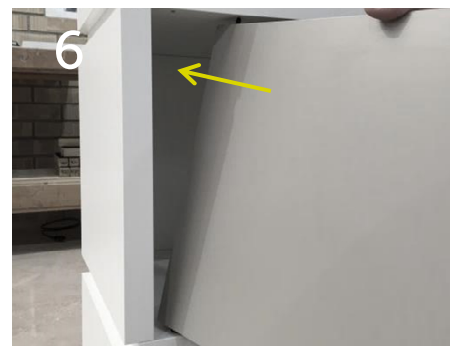
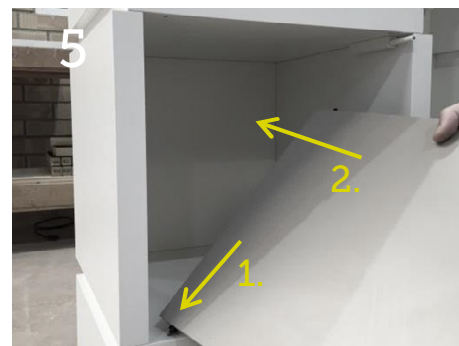
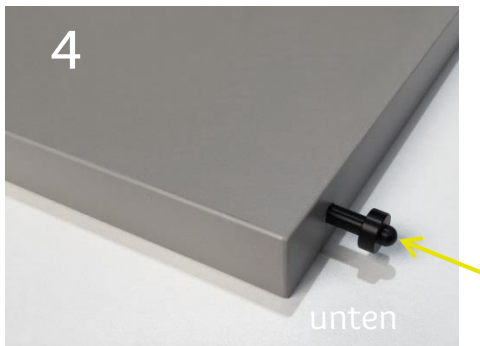
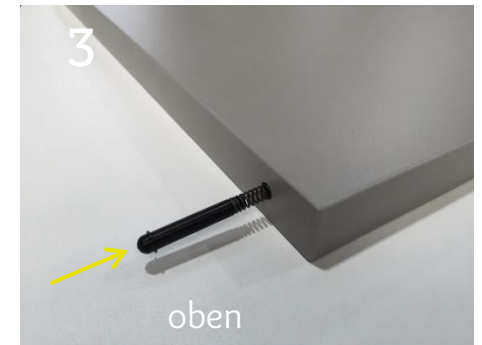
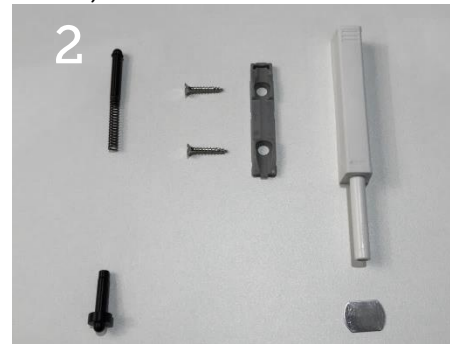
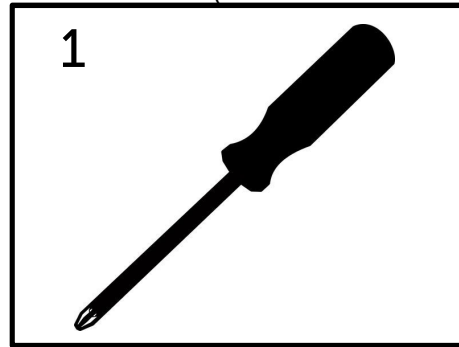


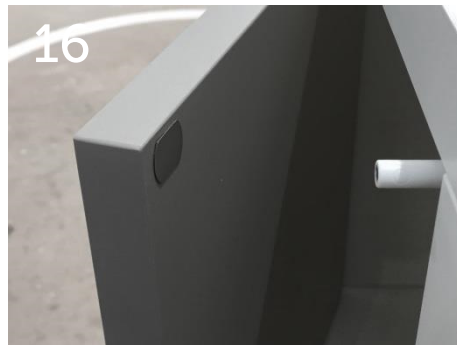
abschlussmodul



- türen
- schubladen
- tablarmodul
- aufbewahrungsboxen

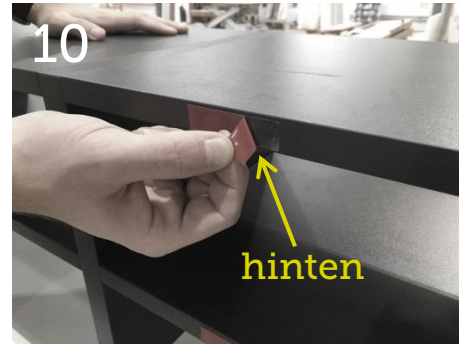
türe montieren (türen bei tablarmodul ->seite 10)



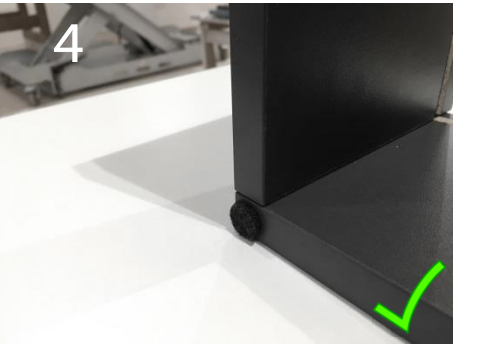
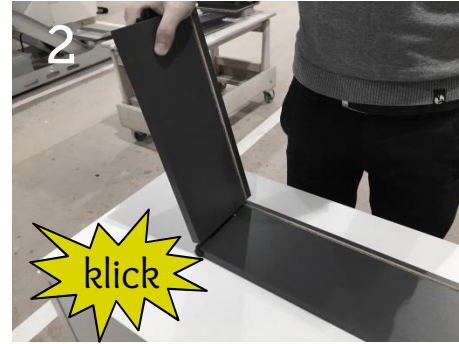


schubladen-einsatz





schubladen

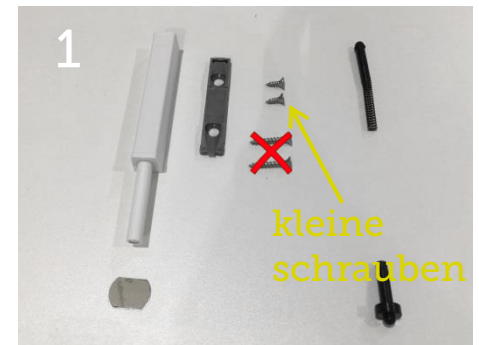




tablar modul



türen vor tablar modul

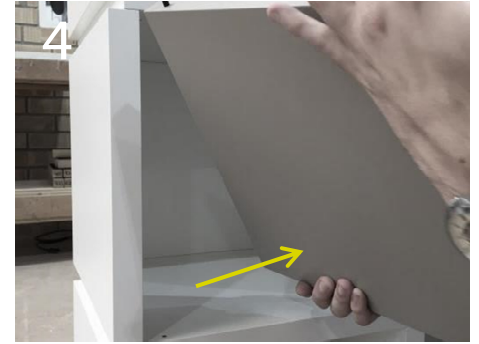
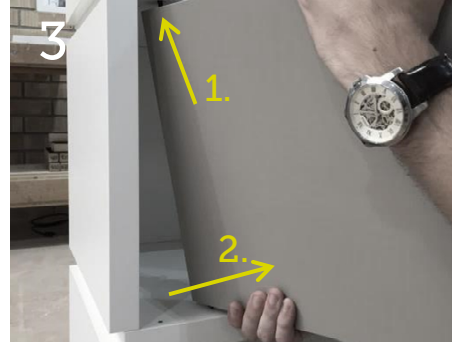


-> sieh auch seite 6-7

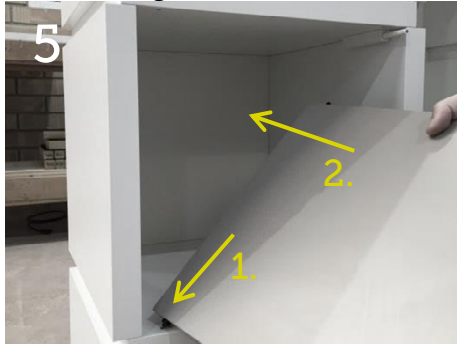
verwandlungskünstler: flexibel umbauen und erweitern



türe aushängen



türe einhängen





boxen falten

